



# Aims of the programme

To train future transport and logistics experts able to deal efficiently with normal and crisis situations and set up a resilient logistics management strategy.

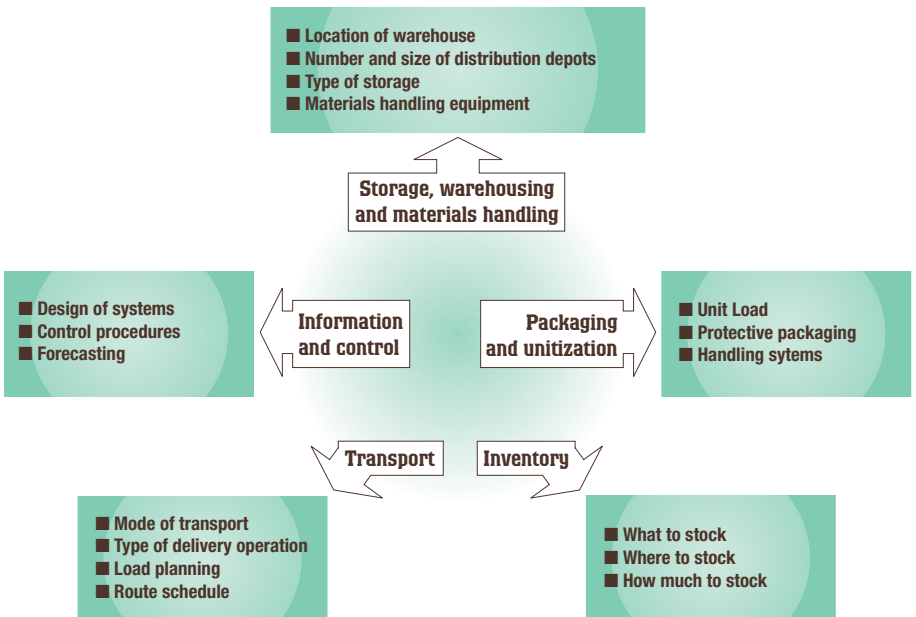


**Mame GNINGUE,**  
Programme Director,  
EM NORMANDIE

*“In a competitive environment where the organizational dimensions of logistics become strategic, this MSc aims to train logistics experts to cope with crisis situations. The movement of goods, people and information requires these new skills notably in the context of the growing impact of climatic and natural insecurity. Organizing, structuring and optimizing logistical operations nowadays calls for integrating the constantly shifting priorities related to good governance and sustainable development. This programme*

*has the ambition of providing leading edge expertise in all the functions and processes related to international logistics management. Once they graduate, the students of this MSc. will have all the tools and methods to actively participate in dynamic and sustainable decision-making sectors such as third-party logistics providers, humanitarian organizations or any businesses striving for superior environmental and social performance.”*

## The key components of distribution and logistics



Source A. Rushton, P. Croucher, P. Baker – Handbook of Logistics and distribution management



# Pedagogical Scheme

## Programme organization:

- Full Time 15 months, starting September
- About 460 hours of face-to-face courses with experienced professionals / professors
- Entirely taught in English
- Work placement (between 4 and 6 months)
- Professional thesis, practical case studies and one assignment

## LEARNING PROCESS

- Lectures
- Tutorials, teamwork and individual research and reports
- Case studies and presentations
- Professional dissertation
- Field project

## ACADEMIC INPUT

### CORE MODULES:

#### BASICS OF OPERATIONS MANAGEMENT

- From Logistics to Value Chain
- Physical Distribution Operations
- Warehouse Management
- Procurement and Purchasing
- Inventory Management and Forecasting
- Pricing and Cost Calculation

#### INTERNATIONAL TRADE

- Transport Economics
- International Trade Operations and Transport Security
- Transport Insurance and Law
- New Trends in Logistics (Reverse Logistics Management, Green Logistics)

#### INTERMODAL TRANSPORT

- Multimodal Transportation
- Port Organization
- Intermediaries in Transportation

#### TRANSPORT MODES

- Road Transport
- Air Transport
- Maritime Transport
- Specialized Transport

#### BASICS SKILLS

- Introduction to Service Systems
- Quality Management
- Risk Management
- Auditing and Controlling

#### WAREHOUSE AND DISTRIBUTION MANAGEMENT

- Physical Distribution Systems
- Location and Warehouse Design

#### TECHNIQUES AND METHODS

- Research Methodology
- Professional Techniques
- Job Research Techniques

#### HUMANITARIAN AND CRISIS MANAGEMENT

- Humanitarian and Disaster Response Law
- Crisis Management
- Humanitarian and Disaster Relief Logistics

#### INFORMATION TECHNOLOGIES

- Management Systems (Tracking and Tracing)
- Decision Making Tools (Operational Research)
- Flowcharting

## PROFESSIONAL DEVELOPMENT

- Junior Consultancy / Mission (5 weeks)
- Business Case Competition (Contest based on real life issues within a company)
- Work placement between 4 and 6 months: May - December

## DISSERTATION

Students complete a 20 000-word Master-level professional thesis

## Testimonials



**Wim VAN ERCK,**  
Management and logistics Consultant,  
Managing Director,  
Consultas N.V.

“Due to the globalization of the economy, modern logistics have been undergoing some dramatic changes. With the widespread introduction the ERP packages, logistics have become more and more the backbone in the organization of most international oriented companies and organizations. However, along with the rise of the global economy the risks involved have been growing tremendously. Modern supply chains are now covering the entire planet and consist of large numbers of individual links. The longer these links are, the higher the danger for disruption. There is therefore a growing need for defining these risks factors well in advance, to reduce them by finding alternatives, to create contingency plans allowing companies and organizations to react in a fast and effective way in case of emergency, and last but not least to reduce and contain the damage occurred. These damages can have many aspects, not only financial consequences and the loss of customers and reputation, but can also result in law suits, in governmental penalties and even loss of life. The 'International Logistics and Crisis Management' MSc programme offered by the Ecole de Management de Normandie trains future logistics experts to cope with these crisis situations.”

**Alain GRALL,**  
Former transport director  
of Médecins sans Frontières,  
Consultant,  
SYSKALYS.

“One of the biggest logistics challenge today for the humanitarian community is that it must respond to mostly unpredictable situations and contexts (conflicts & natural disasters) preparing to initiate humanitarian projects in complex situations. Accordingly, the issue is to get “the right items, at the right place, at the right time”.

The results of such emergency systems are not very efficient and very often the actors of supply chain are not damaged, communication solutions to provide real reliable solutions for humanitarian organizations. The political context is also very often complicated. Consequently humanitarian actors are losing a lot of time to identify the local administrative processes to be applied locally, to follow up and update local purchase in local and regional markets in the sub-region concerned, to satisfy their response to the emergency situation, while trying to comply with the regulations pharmacy, customs, airfreight, security etc... This Master's degree will contribute to improve the expertise of humanitarian actors and also private companies which will have to face in the future such emergency situations.”

## Admission requirements

- BA Honours degree / Master 1 or equivalent,
- Bachelor degree or equivalent,
- Other applicants with non-relevant qualifications but with extensive industry experience will be considered on an individual basis.
- The admission decision is taken after close evaluation of the application form including CV, personal statement and reference letters.
- Application Deadline: April 2 (1<sup>st</sup> session) and July 2 (2<sup>nd</sup> session).

## English language requirement

- TOEIC 790 or TOEFL CBT 230 / IBT 88 or IELTS 6,5 overall and 6 in writing, equivalent or business degree obtained in an English-speaking institution (minimum of one year in an English speakin environment).

## Course fees

- Registration fees: € 100
- Tuition fees for EU Citizens: € 7 700
- Tuition fees for non-EU Citizens: € 9 900
- Alumni association fee: € 300
- Students' association fee: € 62

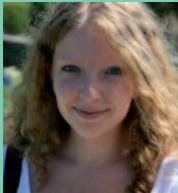
## Career opportunities

Students can claim for positions in industrial companies, logistics service providers as well as in humanitarian organizations in the following sectors:

- International manufacturing / distribution,
- Wholesale distributors
- Logistics service providers,
- Non-Governmental / Humanitarian Organizations,
- Carriers and ports,
- Logistics Audit and Control.

After a period of integration, the graduates will be able to target a variety of career opportunities such as:

- Physical and informational flow manager,
- Sourcing and procurement manager,
- Operations manager,
- International / domestic Logistics manager,
- Warehouse manager,
- Transportation manager,
- Inventory manager,
- Humanitarian Logistics Project manager,
- Logistics consultant.



**Coralie QUERTIER,**

Student,  
EM NORMANDIE.

*"My ambition is to start my own import - export company, which is why I have chosen the Master in International Logistics and Crisis Management. By joining this programme I hope to familiarise myself with the different modes of transport, customs procedures and improve my knowledge in Law, while studying in a truly international context."*

## The HEC Entrepreneurs pedagogical approach: Learning to make decisions and manage through action !

Each field project is entrusted to a company, a public or private development organisation and undergoes a rigorous selection process by the MSc programme director. Each field project is carried out by a team of three students over a period of 5 weeks.

The students approach the field project as *junior consultants* and are considered as real assistants by the professional in charge of supervising and supporting them.

At the end, *a final day is organised* when each team presents its work to a panel of executives and managers of companies specialised in the subject of the field project.

The panel evaluates the quality of the analysis and the relevance of the recommendations. Very much based in corporate reality, this pedagogical approach was developed in partnership with the Groupe HEC Paris. It allows students to build a CV rich in diversified experience, to acquire multiple competencies and to develop their capacity to take risks and work in teams... qualities which are essential to the professional success of future managers.



Find out  
about the school  
on the **EM NORMANDIE**  
YouTube channel  
[www.youtube.com/TheEmnormandy](http://www.youtube.com/TheEmnormandy)

More information  
on **EM NORMANDIE**

[www.em-normandie.fr](http://www.em-normandie.fr)

 [www.facebook.com/EMNormandie](http://www.facebook.com/EMNormandie)

 @EMNormandie

 TheEmnormandy

# Seine-Maritime competitive hub, Le Havre, France

With training in logistics based on local know-how, the Ecole de Management de Normandie is part of a group responsible for developing the Seine-Normandie logistics project in close association with professionals working in the logistics field. Aspiring young executives training in the supply chain management sector will both benefit from local business know-how and, in turn, contribute their skills to the economy. Thanks to the catalytic effect of the Port 2000-project, demand for logistics services has continued to grow in the region. This has led to the development of a competitive hub which is recognized worldwide for its specific know-how.



## Le Havre Campus

Situated on one of the busiest sea routes in the world, Le Havre is the largest town in Normandy, the 5<sup>th</sup> port in Europe and a major international trade hub and gateway to Paris area and the heart of Europe.

The Ecole de Management de Normandie campus is downtown by the marina and the beachfront and spreads over 10 000 sq m with 3 lecture halls, 5 PC rooms, 240 self-access PCs, a media centre on two levels, 26 lecture rooms, a sports complex and a cafeteria.

Scan the flashcode with your mobile phone and find all information on the EM NORMANDIE website !



Partner



EM NORMANDIE is committed to sustainable development



## Contacts

Laëtitia SCHMITT, Programme Assistant  
+ 33 (0)2 32 92 70 82 - l.schmitt@em-normandie.fr  
Nathalie NÉEL, Head of Communication and Promotion  
+ 33 (0)2 31 46 78 99  
n.neel@em-normandie.fr  
 [www.facebook.com/nathneel.emnormandie](http://www.facebook.com/nathneel.emnormandie)

## École de Management de Normandie

Non-profit association under the 1901 Act, operating under a private law contract

30, rue de Richelieu - 76087 LE HAVRE CEDEX  
Tél. : +33 (0)2 32 92 59 99 - Fax : +33 (0)2 35 42 11 16

9, rue Claude Bloch - 14052 CAEN CEDEX 4  
Tél. : +33 (0)2 31 46 78 78 - Fax : +33 (0)2 31 43 81 01

25, avenue de la République - 14800 DEAUVILLE  
Tél. : +33 (0)2 50 31 11 00 - Fax : +33 (0)2 50 31 11 09

info@em-normandie.fr - www.em-normandie.fr

The École de Management de Normandie has been created by the Chambers of Commerce of Caen and Le Havre.  
Member of the Chapitre des Écoles de Management de la Conférence des Grandes Écoles (CGE) • Member of the Polytechnicum de Normandie  
• Member of the Fondation Nationale pour l'Enseignement de la Gestion des Entreprises (FNEGE) • Associate Member of the Union des Grandes Écoles Indépendantes (UGEI) • Member of Campus France • Founding member of the European Master of Business Sciences (EMBS)  
• Member of the European Foundation for Management Development (EFMD) • Member of the Association to Advance Collegiate Schools of Business (AACSB) • EPAS accreditation for the pre-experience EM NORMANDIE Master's degree.